

NEW

192 ... ST

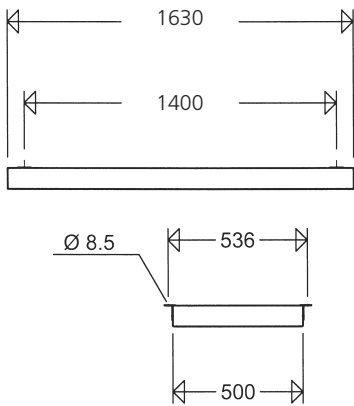
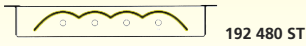
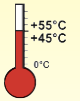


with narrow beam reflector for mounting heights up to 25m



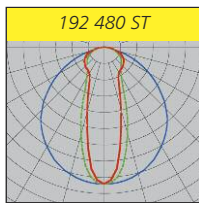
Application: High ceiling installations with mounting heights up to 25m.
Mounting: 4 angle brackets for direct ceiling mounting (included). Type 192 6.. for suspended installation
Options: – industrial electronic ballast, for ambient temperatures up to +55°C (4 x 80W) or +45°C (6 x 80W), life cycle up to 100,000h

only. Mounting brackets will then be used for cable suspension.
Ambient temperature:
 192 4.. -20°C up to +40°C
 192 6.. -20°C up to +35°C



Product advantages:

- up to 50% energy cost saving in comparison to high pressure mercury lamp, with modern light control systems even up to 70% possible
- high potential saving at maintenance and lamp replacing costs due to use of longlife lamps (with threefold longer lift time in comparison to high pressure mercury lamps) and Industrial ECG with life time up to 100,000 hours
- highest photometric efficiency with a fitting operating efficiency of 97%
- predestined for rough industrial conditions
 - robust, plain sheet steel housing without prone to dirt, outlying closure parts
 - frameless safety glass with internal original SCHUCH-central locking system for time-saving lamp replacement, durable safety shutting
 - colour reproduction Ra ≥ 80, according to the worplace guide lines suitable for nearly all plant locations
 - on demand with plug-in connection for time-saving mounting



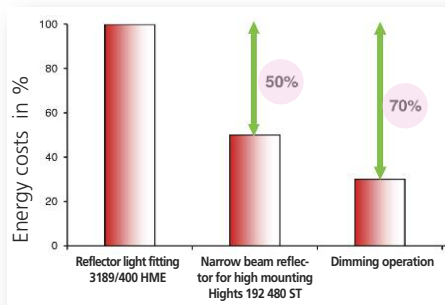
| Type | Article no. | Lamps W | Weight ca. kg ²⁾ |
|--------------------------|-------------|-------------|-----------------------------|
| 192 435 ST | 19103 0242 | 4 x T16 35W | 23,8 |
| 192 449 ST | 19103 0243 | 4 x T16 49W | 23,8 |
| 192 480 ST | 19103 0241 | 4 x T16 80W | 23,8 |
| 192 635 ST ¹⁾ | 19103 0252 | 6 x T16 35W | 24,7 |
| 192 649 ST ¹⁾ | 19103 0253 | 6 x T16 49W | 24,7 |
| 192 680 ST ¹⁾ | 19103 0251 | 6 x T16 80W | 24,7 |

1) suspended installation only

2) Weights without packing material

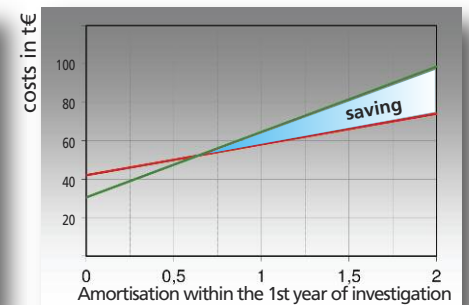
Comparison of operating efficiency

Assembly hall 50x80x15m, LPH 12m, 500lux



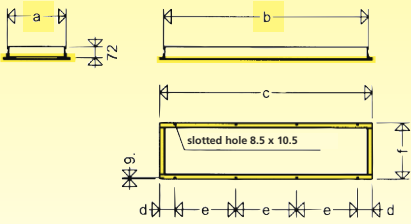
Energy cost savings

Comparison of total costs / time of amortization



Frame for Recessed Mounting

Mounting Dimensions



| lamps | a | b | c | d | e | f |
|---------|-----|------|------|----|-----|-----|
| 191 .18 | 388 | 740 | 786 | 93 | 300 | 434 |
| 191 .36 | 388 | 1350 | 1396 | 98 | 400 | 434 |
| 191 .58 | 388 | 1650 | 1696 | 48 | 400 | 434 |
| 192 .18 | 520 | 740 | 786 | 93 | 300 | 566 |
| 192 .36 | 520 | 1350 | 1396 | 98 | 400 | 566 |
| 192 .58 | 520 | 1650 | 1696 | 48 | 400 | 566 |

Note: The additional length of the cable entry must be taken into account when mounting!

retrofit possible!

Light fittings of the series 191 / 192... can also be adapted for flush mounting in ceilings or walls using a separately supplied frame.

The light fitting is mounted using M5 screws along the long sides (see dimension drawing!).

| Type | Article no. | |
|-----------|-------------|-----------------------------|
| EB 182/18 | 18091 0004 | frame for 191 .18/14/24W |
| EB 182/36 | 18091 0005 | frame for 191 .36/28/54W |
| EB 182/58 | 18091 0006 | frame for 191 .58/35/49/80W |
| EB 192/18 | 18091 0013 | frame for 192 .18/14/24W |
| EB 192/36 | 18091 0014 | frame for 192 .36/28/54W |
| EB 192/58 | 18091 0015 | frame for 192 .58/35/49/80W |

Note:

When inquiring / ordering, please state the type of ceiling in which the light fitting is to be mounted. With certain ceiling designs, it may be necessary to move the cable entry to the rear of the light fitting.

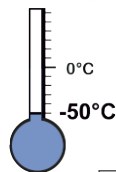
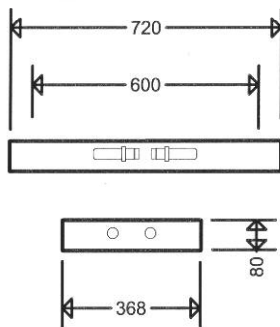
Mounting possibilities:

- in suspended ceilings (standard, when no specification is given).
- in recesses in concrete walls.
- in insulated ceilings acc. to EN 60598



191 470 T.. H..

for low ambient temperatures to -50°C



Application:

Cold rooms (automobile industry), frequently opened small cold stores with a high number of switching cycles.

Advantage:

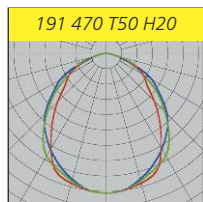
instant full luminous flux when switching

on light fitting.

Design:

As standard type but with anodized pure aluminium mirror finish reflector, silicone free.

| Type | Article no. | Lamps W | Weight ca. kg ¹⁾ |
|--|-------------|-------------|-----------------------------|
| for halide lamps, lamp holder E27 (silicone free) | | | |
| 191 470 T50 H20 | 19104 0002 | 4 x QT/70 W | 8,7 |
| 1) Weights without packing material | | | |
| Note: 10% reduction of the voltage will increase the life time of the halide lamp by the factor of 3! | | | |



Accessories / Spare Parts

| Type | Article no. | |
|--|-------------|--|
| Spare safety glass | | |
| 182 18-1 | 18090 9004 | for 191 .18/14/24W |
| 182 36-1 | 18090 9005 | for 191 .36/28/54W |
| 182 58-1 | 18090 9006 | for 191 .58/35/49/80W |
| 192 18-1 | 19190 9003 | for 192 .18/14/24W |
| 192 36-1 | 19190 9004 | for 192 .36/28/54W |
| 192 58-1 | 19190 9005 | for 192 .58/35/49/80W |
| Cable entries | | |
| 2560 | 25600 9000 | plastic cable gland M25 x 1,5 |
| 2572 | 25720 9000 | threaded blanking plug M25 x 1,5 |
| Lamp holder | | |
| 177/1 | 17703 9000 | without starter holder |
| 177/2 | 17703 9001 | with starter holder |
| 190 | 90056 9007 | starter holder T5 |
| mounting parts for suspended installation | | |
| 192 Y P | 90022 0002 | - 1 pair, Y-cable suspension, adjustable (2-point fixing) |
| 192 YK P | 90022 0004 | - 1 pair, Y-chain suspension, adjustable (2-point fixing) |
| KPS 40 | 90022 0003 | - chain pendulum 1m with hook and eyelet for fastening and length compensation (4 pcs. needed per light fitting) |

See end of section "Dustproof/Waterproof light fittings" for through-wiring options.